

## **LingoPi – Brief Introduction**

LingoPi is an IP camera firmware for Raspberry Pi, implemented with Lingodigit's software to create an ONVIF device. It serves as an excellent ONVIF software reference, featuring:

- Verification capabilities via ONVIF Device Test Tool
- Professional ONVIF consultation services
- Complete Profile S, T, M and G services

If you are interested in our software for ONVIF device and would like to get a LingoPi demo image which supports ONVIF Profile S. Please contact us for further information:  
info@lingodigit.com

This free LingoPi image is a limited version. It supports ONVIF profile S service , but has the event service of ONVIF Profile S disabled.

### **LingoPi Provide Advanced Testing Services for Companies or Organizations:**

- Other versions of Raspberry Pi
- USB camera support
- Complete Profile S service

### **LingoPi's Free Download Version:**

#### **Hardware Requirement:**

- Raspberry Pi 3 / 4
- Raspberry Pi camera module v1 (5MP), v2 (8MP);

#### **Default Settings:**

- IP address: DHCP
- Username: admin
- Password: admin

#### **Capabilities:**

- Number of supported streams: 1
- Supported video codec: MJPEG, H.264
- Supported video resolution: 1280x720, 640x360 upto 30fps

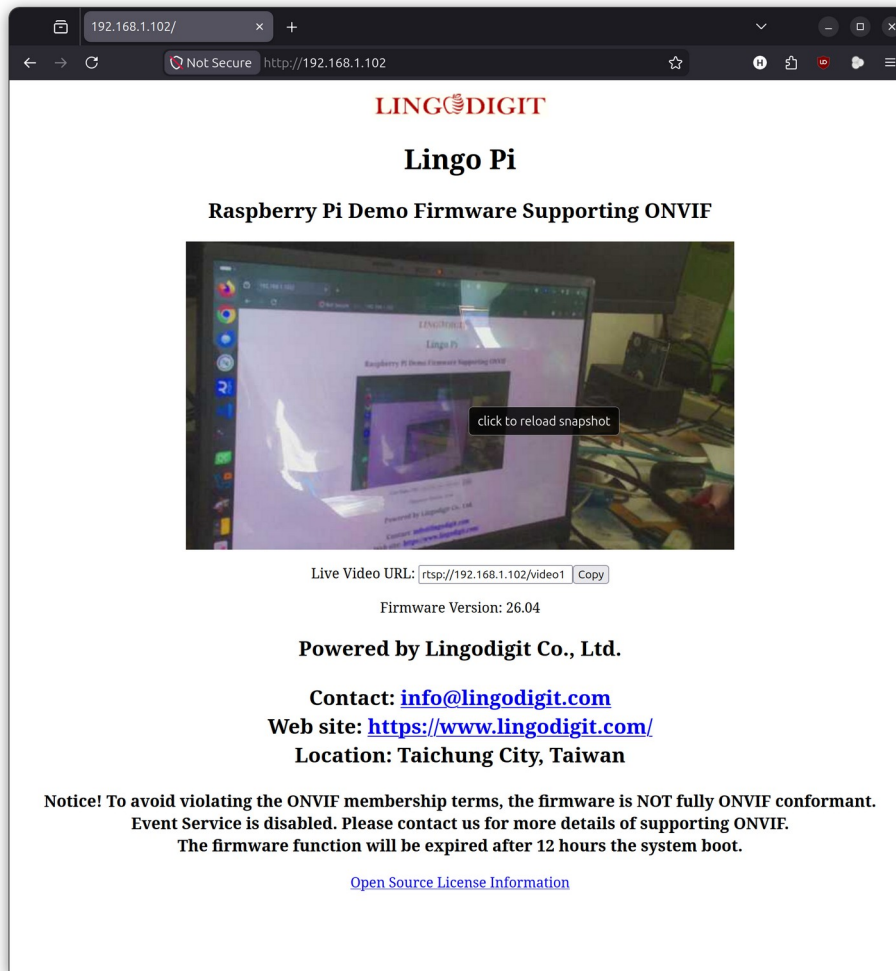
#### **Supported Features:**

- Device Discovery
- Device Management Service
- Media Service
- RTSP streaming

#### **Limited Services:**

- Notice! To avoid violating the ONVIF membership terms this firmware is NOT fully ONVIF conformant. Because we have the event service of ONVIF Profile S disabled.
- Supports JPEG snapshot live video of web page.
- The firmware function will be expired after 12 hours the system boot.

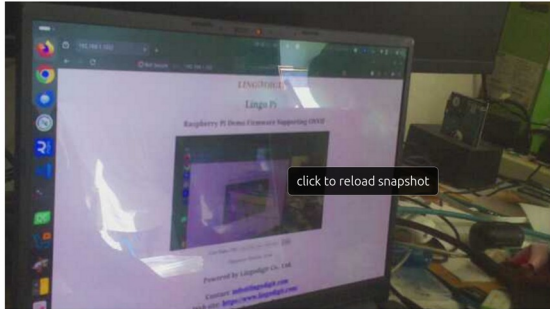
## Support JPEG snapshots of live video from web pages



**LINGODIGIT**

### Lingo Pi

Raspberry Pi Demo Firmware Supporting ONVIF



Live Video URL:

Firmware Version: 26.04

**Powered by Lingodigit Co., Ltd.**

**Contact:** [info@lingodigit.com](mailto:info@lingodigit.com)  
**Web site:** <https://www.lingodigit.com/>  
**Location:** Taichung City, Taiwan

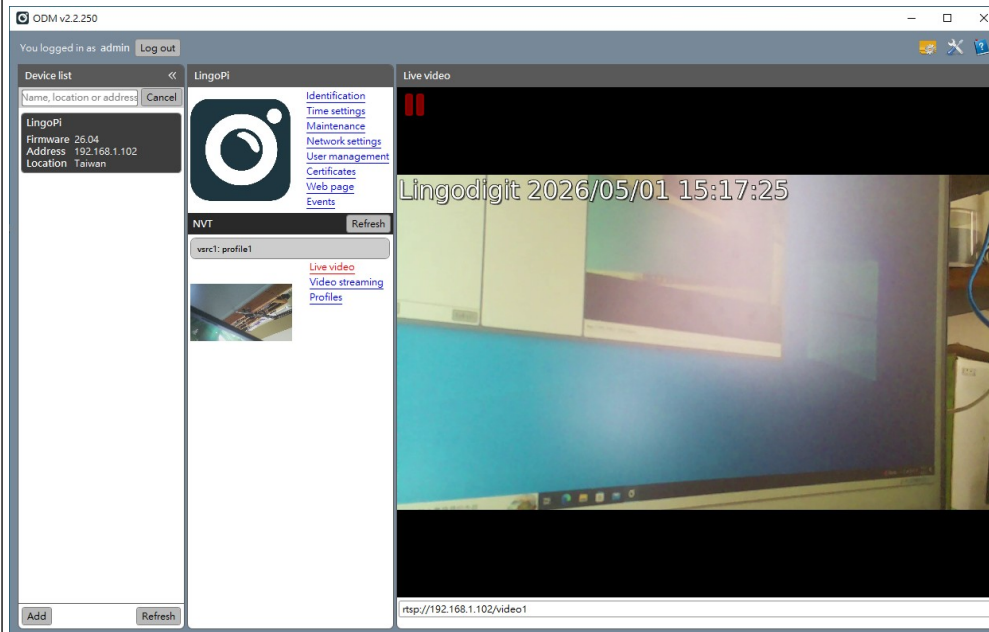
**Notice!** To avoid violating the ONVIF membership terms, the firmware is NOT fully ONVIF conformant.  
Event Service is disabled. Please contact us for more details of supporting ONVIF.  
The firmware function will be expired after 12 hours the system boot.

[Open Source License Information](#)

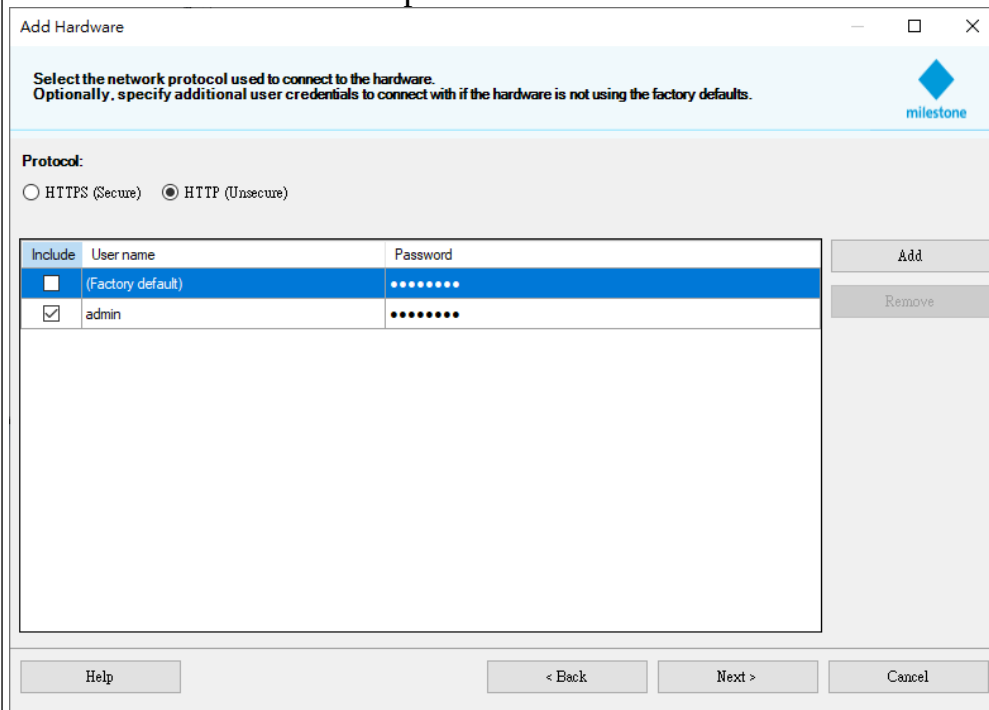
## Examples of Lingo Pi configuration in ONVIF client software

1. ODM
2. Milestone XProtect Corporate
3. IP CENTCOM

### 1. ODM




### 2. Milestone XProtect Corporate



### Add Hardware

Wait while your hardware is being detected.  
Once detection has completed, select which hardware to add.



Stop

Detected hardware:

Add	Address	Port	Hardware model	Status
<input checked="" type="checkbox"/>	192.168.1.102	8080	Lingodigit Lingo Pi (ONVIF)	Success

Show IPv6 addresses  
 Show hardware running on other recording servers

Help < Back Next > Cancel

Milestone XProtect Management Client 2025 R3

File View Action Maintenance Tools Help

Site Navigation (25.3s)

- Basics
  - License Information
  - Site Information
  - Remote Connect Services
  - Axis One-click Camera Connection
- Servers
  - Recording Servers
  - Failover Servers
  - Mobile Servers
- Devices
  - Cameras
  - Microphones
  - Speakers
  - Metadata
  - Input
  - Output
- Client
  - Smart Wall
  - View Groups
  - Smart Client Profiles
  - Management Client Profiles
  - Matrix
- Rules and Events
  - Rules
  - Time Profiles
  - Notification Profiles
  - User-defined Events
  - Analytics Events
  - Generic Events
  - Webhooks
- Security
  - Roles
  - Basic Users
- System Dashboard
  - Current Tasks
  - System Monitor
  - System Monitor Thresholds
  - Evidence Lock
  - Configuration Reports
- Server Logs
- Metadata Use
  - Metadata Search
- Access Control
  - Systems
  - Groups
- Incidents
  - Incident properties
  - Alarms

Recording Server

Filter your devices  
 Hide disabled devices

- Recording Servers
  - DE:
    - Lingodigit Lingo Pi (192.168.1.102)

Properties

Hardware information

Name: Lingodigit Lingo Pi (192.168.1.102)

Description:

Model: Lingodigit Lingo Pi

Serial number:

Driver: ONVIF Conformant Device

Address: http://192.168.1.102:8080/

MAC address:

Firmware version: 26.04

Preview

Live: 1280x720

Lingodigit 2026/05/01 15:21:42

Lingodigit Lingo Pi (192.168.1.102) - Camera 1

### 3. IP CENTCOM

